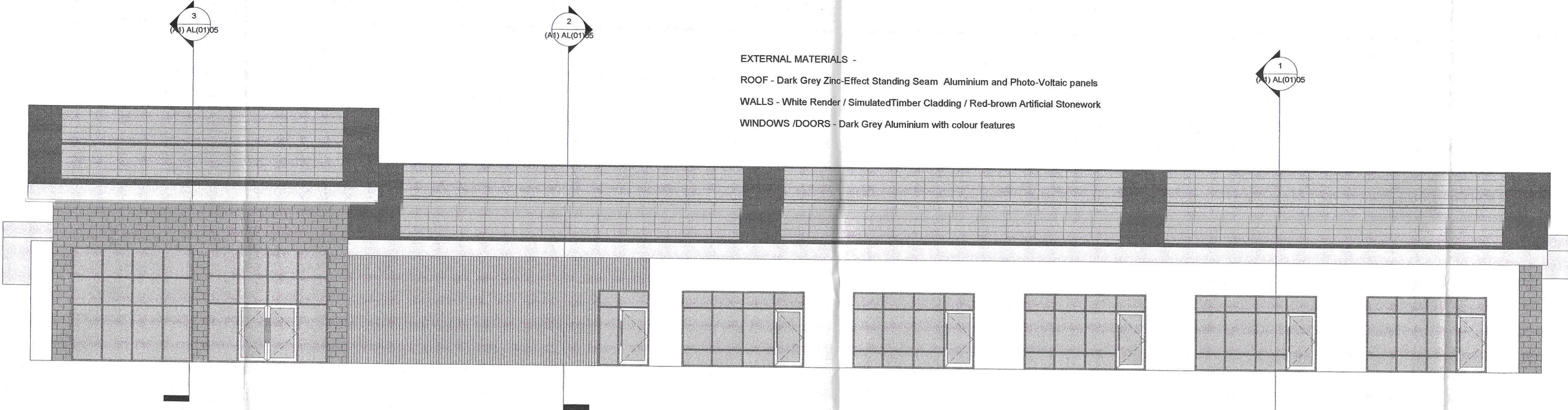


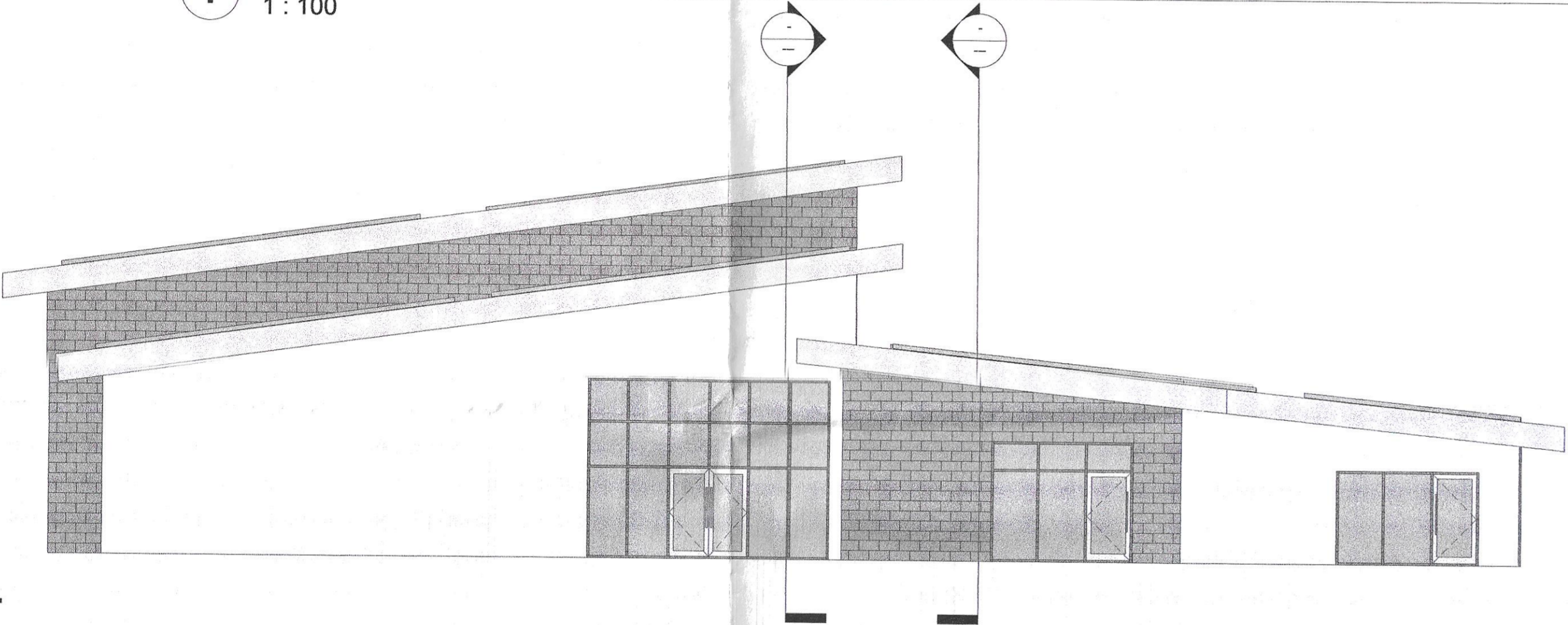
EXTERNAL MATERIALS -
 ROOF - Dark Grey Zinc-Effect Standing Seam Aluminium and Photo-Voltaic panels
 WALLS - White Render / Simulated Timber Cladding / Red-brown Artificial Stonework
 WINDOWS /DOORS - Dark Grey Aluminium with colour features

SOUTH LANARKSHIRE COUNCIL
 Town & Country Planning (Scotland) Acts
 APPROVED
 IN TERMS OF CONSENT OF
 27 June 2016
 Head of Planning
 and Clerk

1 NORTH
 1:100

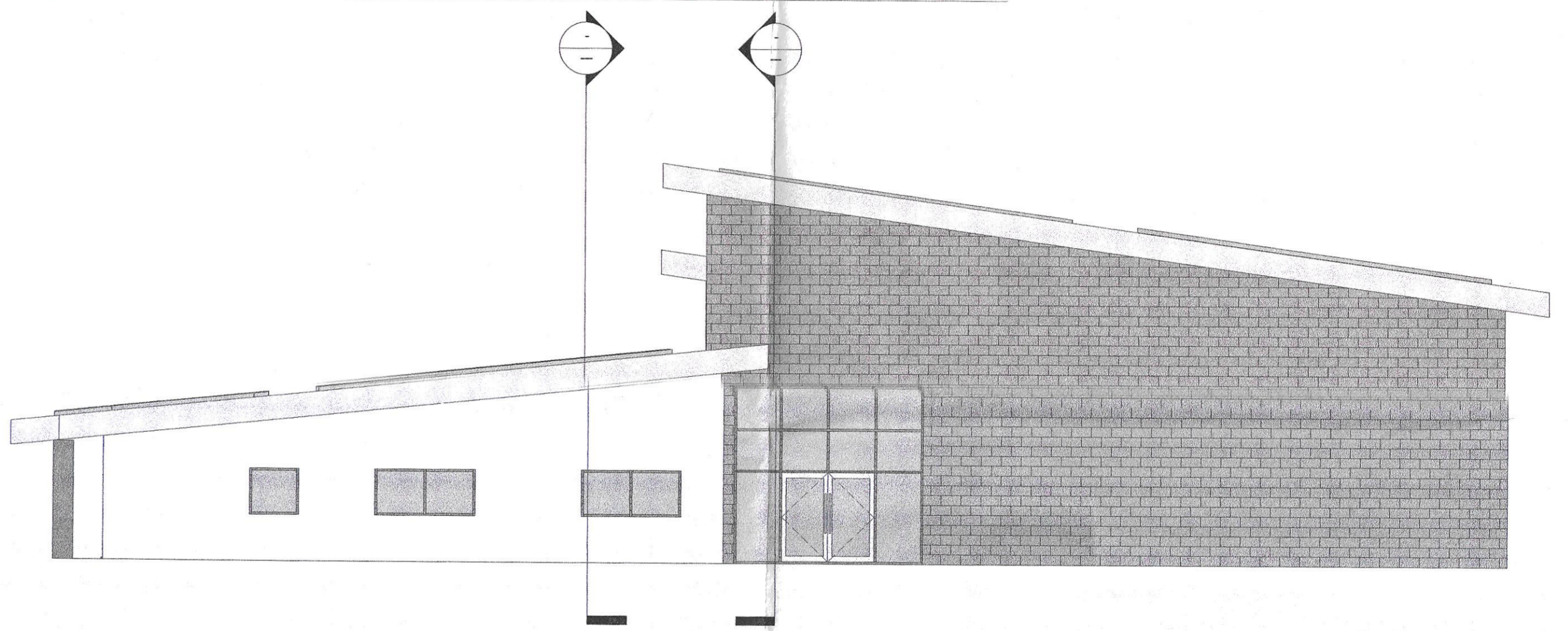


2 WEST
 1:100

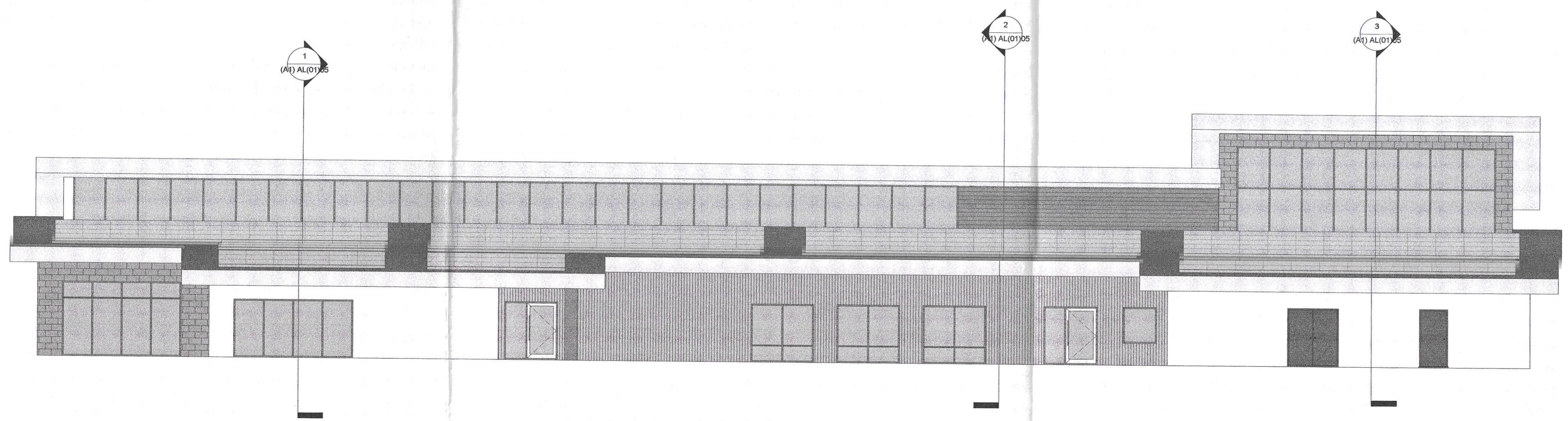


- Level 4
8200
- Level 3
5600
- Level 1
3600
- Level 0
0

4 EAST
 1:100



3 SOUTH
 1:100



- Level 4
8200
- Level 3
5600
- Level 2
5400
- Level 1
3600
- Level 0
0

Rev.	Date	Description	Chkd

FEASIBILITY

DO NOT SCALE FROM THIS DRAWING.
 ALL DIMENSIONS MUST BE VERIFIED ON SITE.
 ANY DISCREPANCIES MUST BE REFERRED TO THE ARCHITECT/CONTRACT ADMINISTRATOR
 BEFORE PROCEEDING.

SOUTH LANARKSHIRE COUNCIL
 Housing & Technical Resources
 Design, Brandon Gate,
 Hamilton, ML3 0XB
 Tel: (0303) 123 1015
 Fax: (01698) 453069

Project Title
 TINTO PRIMARY SCHOOL
 SYMINGTON

Drawing Title
 ELEVATIONS AS PROPOSED

SLPN

Project Code
 EDD008653

Drawing No
 (A1) AL(01)07

Scale
 1:100

Checked
 Approved
 Drawn
 Date

TM
 R1
 TM
 26/10/15